



Õlg õla kõrval.

Vol 2.

Hendrik Vaaks
Radiologia I

ITK
2022

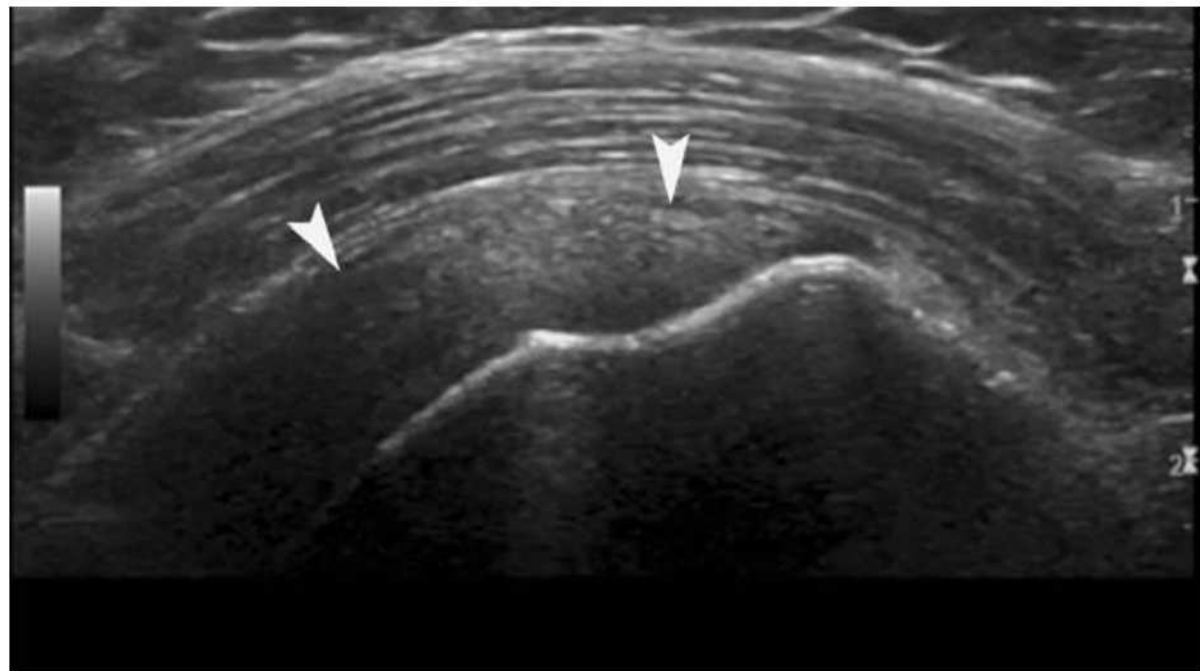
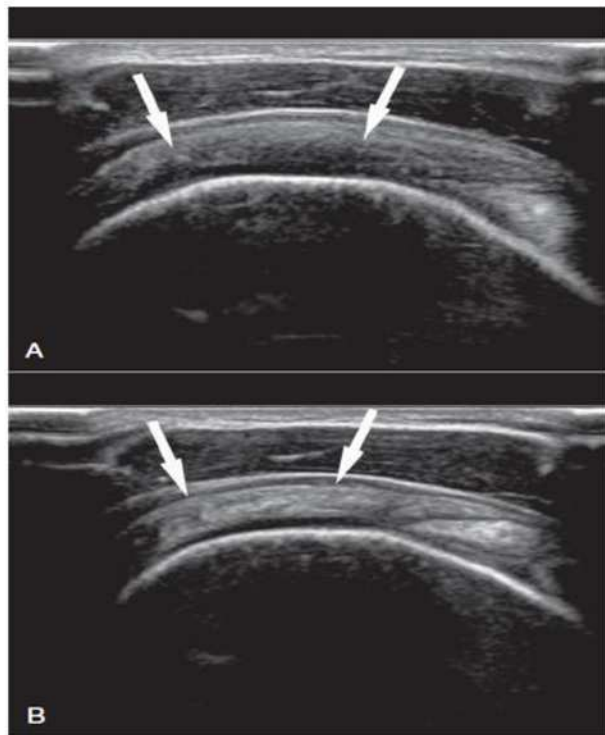
Patoloogiad

- × Kõõluse lesioonid
 - × Tendinopaatia (tendinoos / tendiniit +- kaltsifikaadid)
 - × Tenosünoviit
 - × Rebend (grade 1, 2, 3 on kas osaline läbiv/mitteläbiv)
- × Pitsumine
- × Lihaste lesioonid
 - × Rebendid
 - × Müofastsiaalsed defektid
 - × Atroofia / rasvdüstroofia
 - NB! Atroofia neuuraalsest patoloogiast

Sagedasemad haigused esinevad...

- × ... sagedamini.
- × Rotaatormansett (RM / RC)
 - × Supraspinatus (SSP)
 - × Subscapularis (SSC)
 - × Infraspinatus (ISP)
 - × Teres minor (TMin)
- × Subakromiaal-subdeltoid bursa (SASD)
- × M. biceps brachii pika pea kõõlus (LHBB)
- × Glenohumeraalne (GH) või akromioklavikulaarne (AC) artropaatia





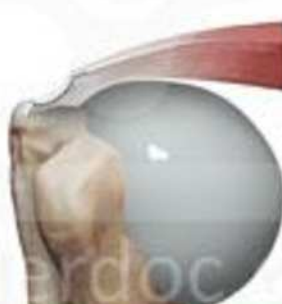
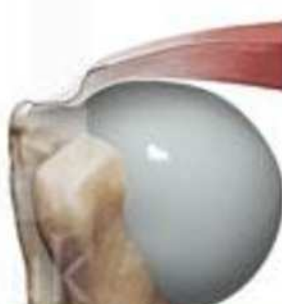
Norm vs tendinoos



Rebendi tunnused

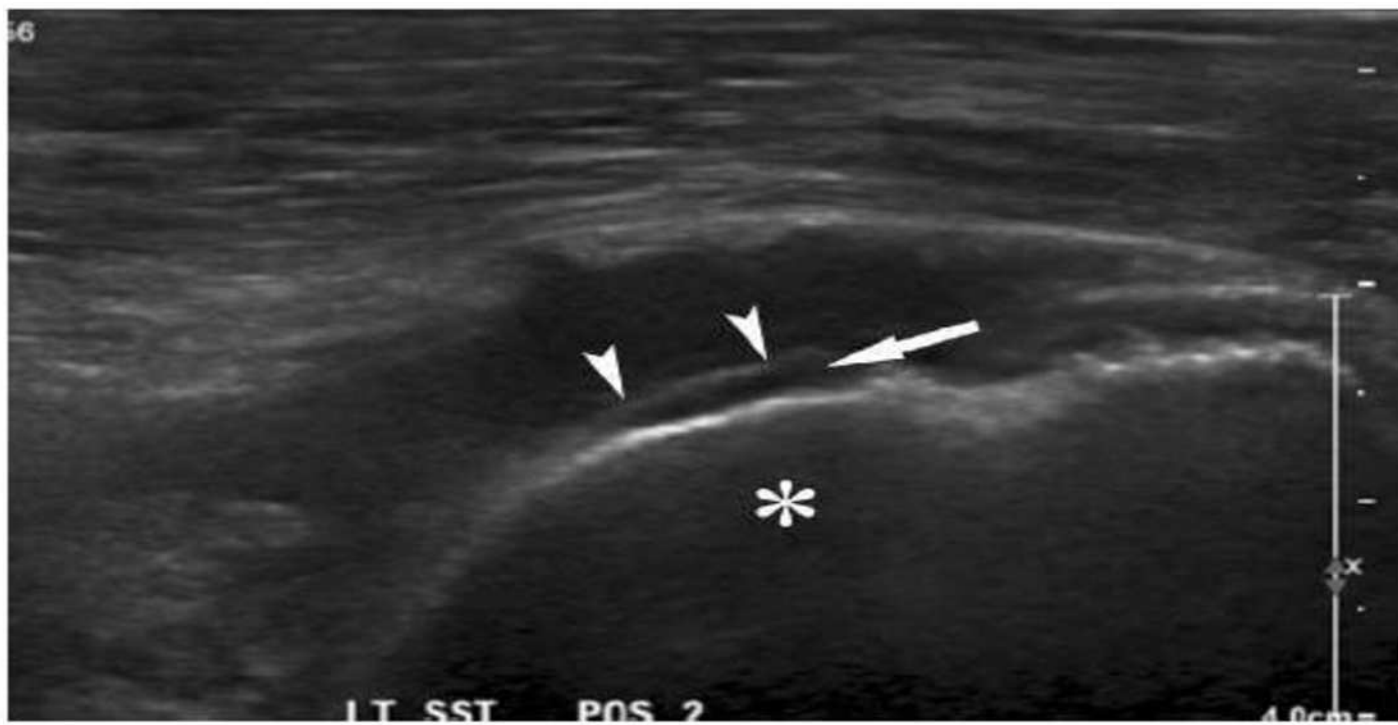
- × Kõõluskiudude intaktsuse katkemine
 - × Läbiv või mitteläbiv (artikulaarset vs bursa kontuuri haarav = kapsulaarne vs ekstrakapsulaarne) või kõõlusesisene
- × Kõõluse fokaalne õhenemine
- × Kõhre üleminekukihi tunnus
- × Hematoom (tavaliselt väike)
- × Luufragment (avulsioon)
- × Kõõluse puudumine (retraktsioon)

CLASSIFICATION OF PARTIAL TEARS Based on depth of defect

Articular surface			
Brusal surface			
	GRADE 1 <1/4 Thickness (-3mm)	GRADE 2 <1/2 Thickness (3-6mm)	GRADE 3 >1/2 Thickness (+6mm)

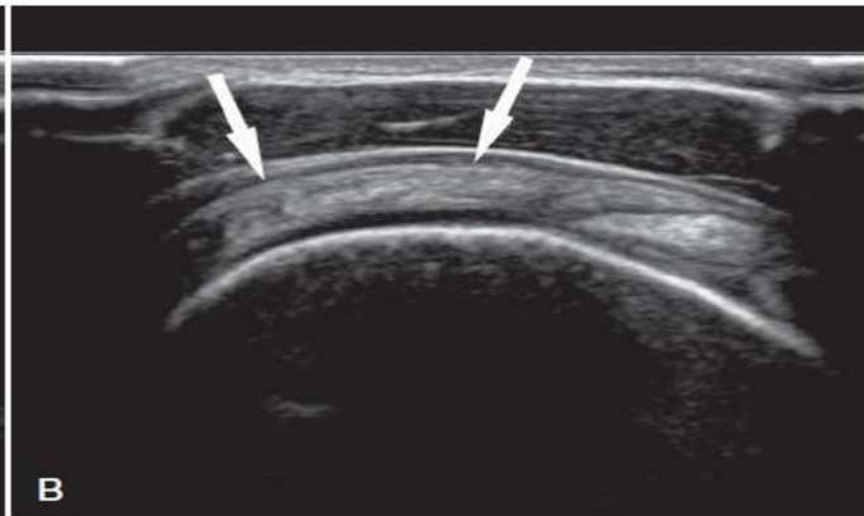
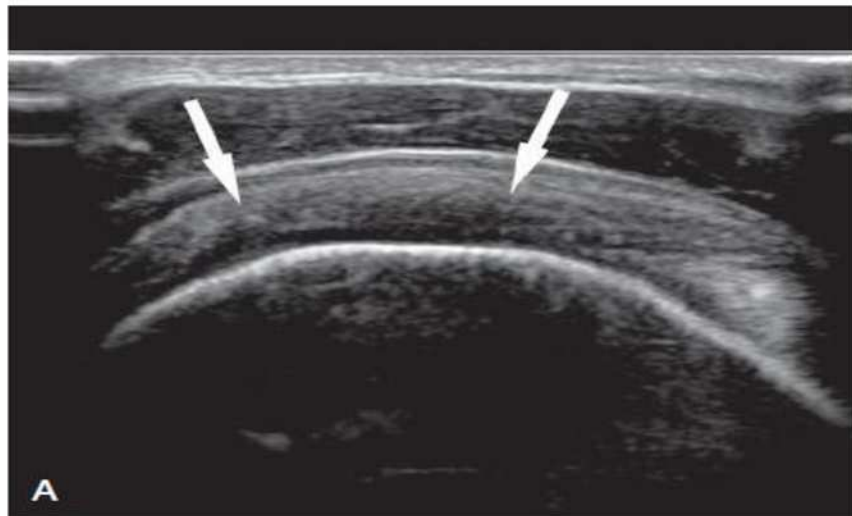




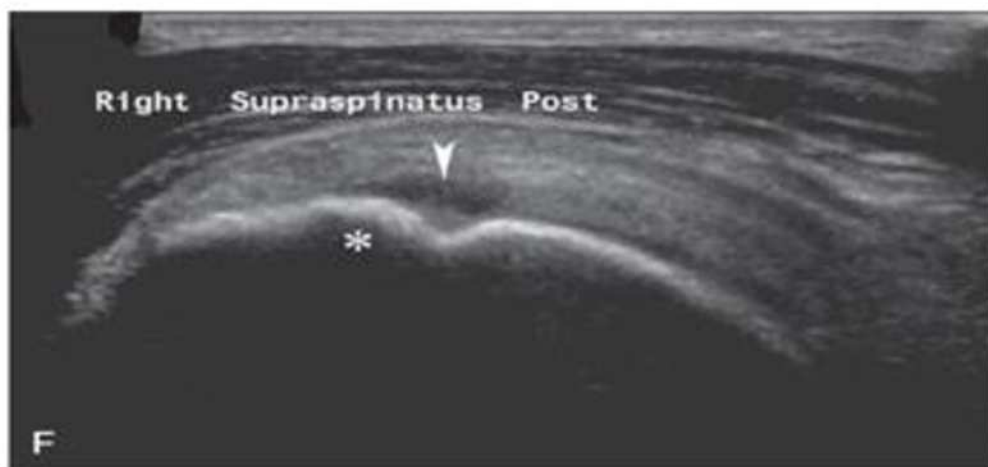


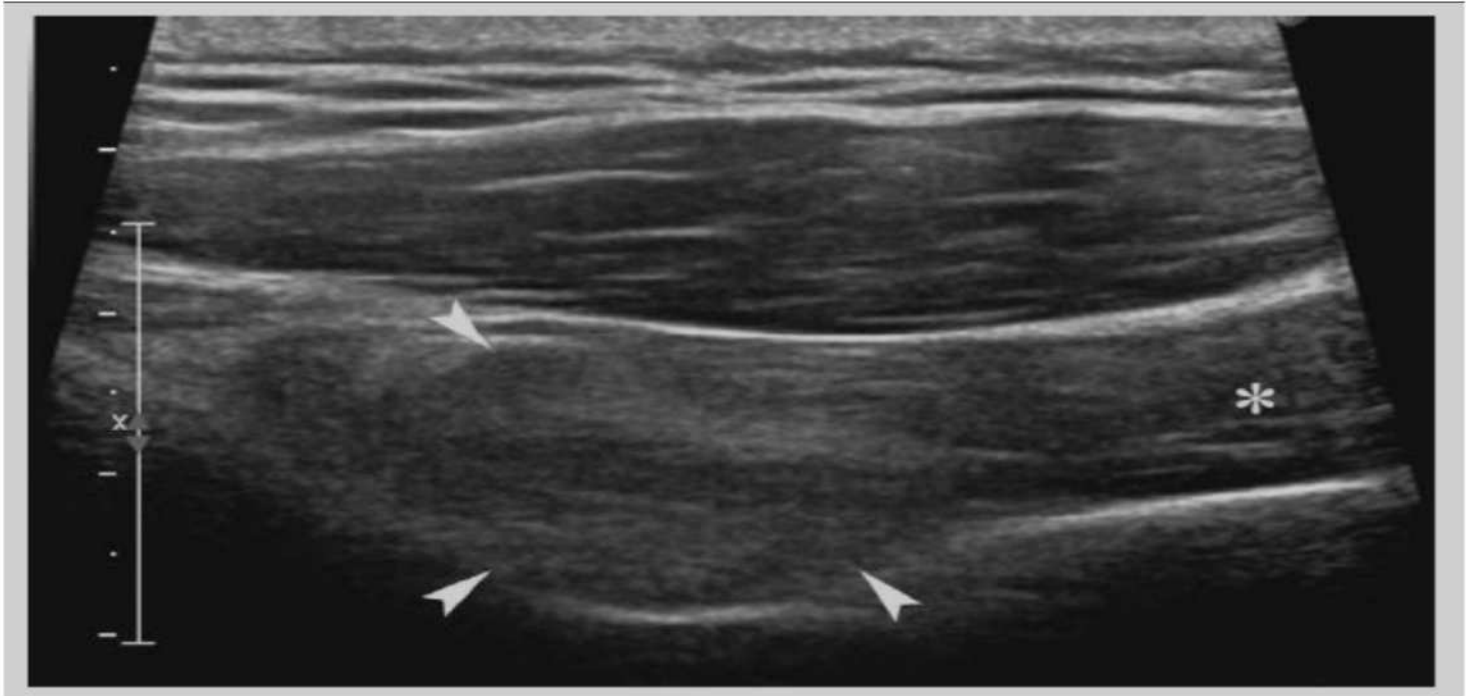












Strobel klassifikatsioon

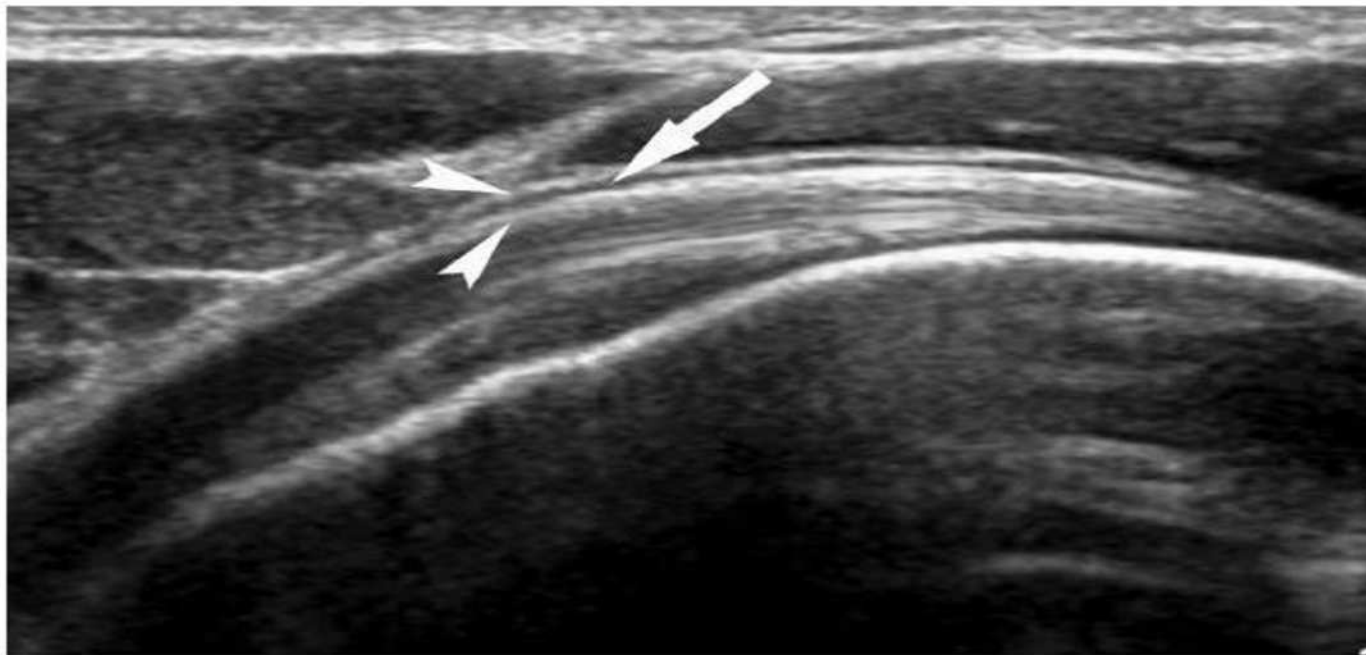
× Atroofia

- × 0 = normaalne, selgete kontuuridega ja tsentraalse kõõlusega
- × 1 = osaliselt normaalne
- × 2 = normaalsed struktuurid ei visualiseeru

× Kajalisus (vs m. deltoideus)

- × 0 = isoehhogeenne
- × 1 = kergelt kajarikkam
- × 2 = oluliselt kajarikkam

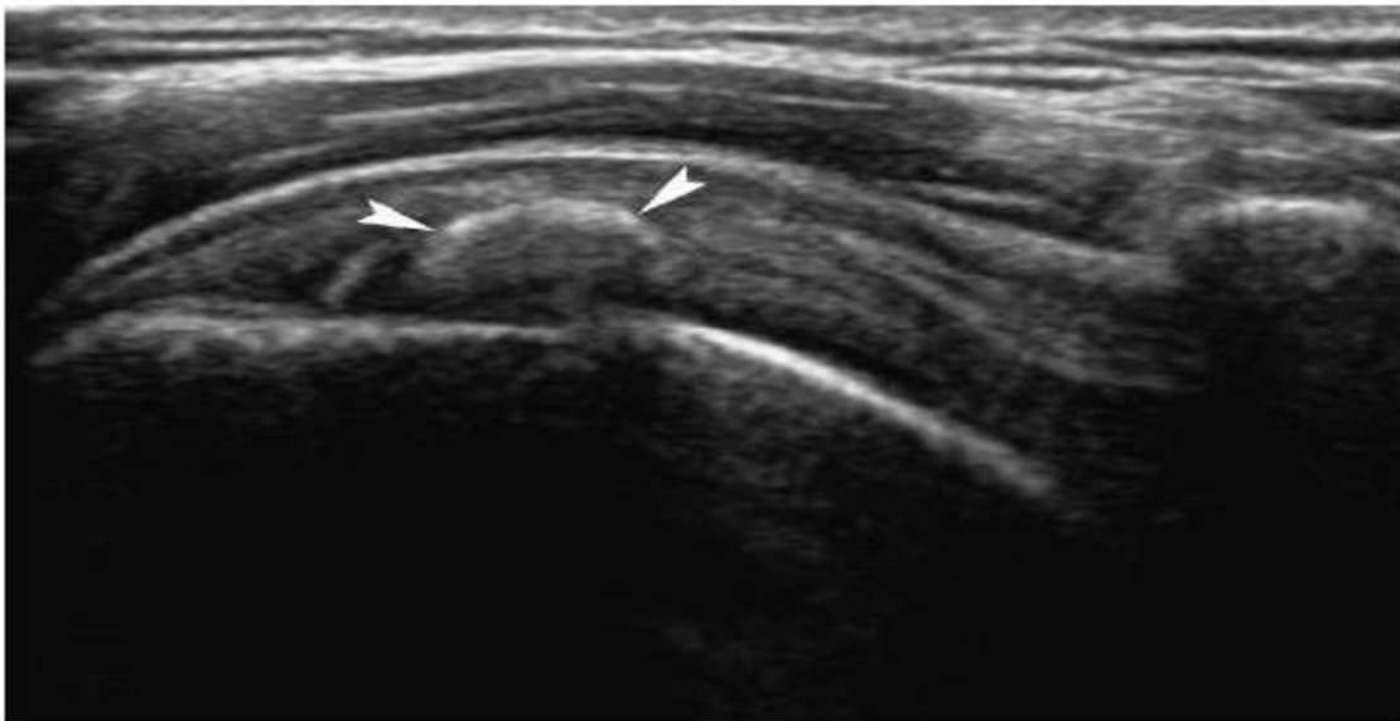
SASD (kihipaksus normis <2 mm)

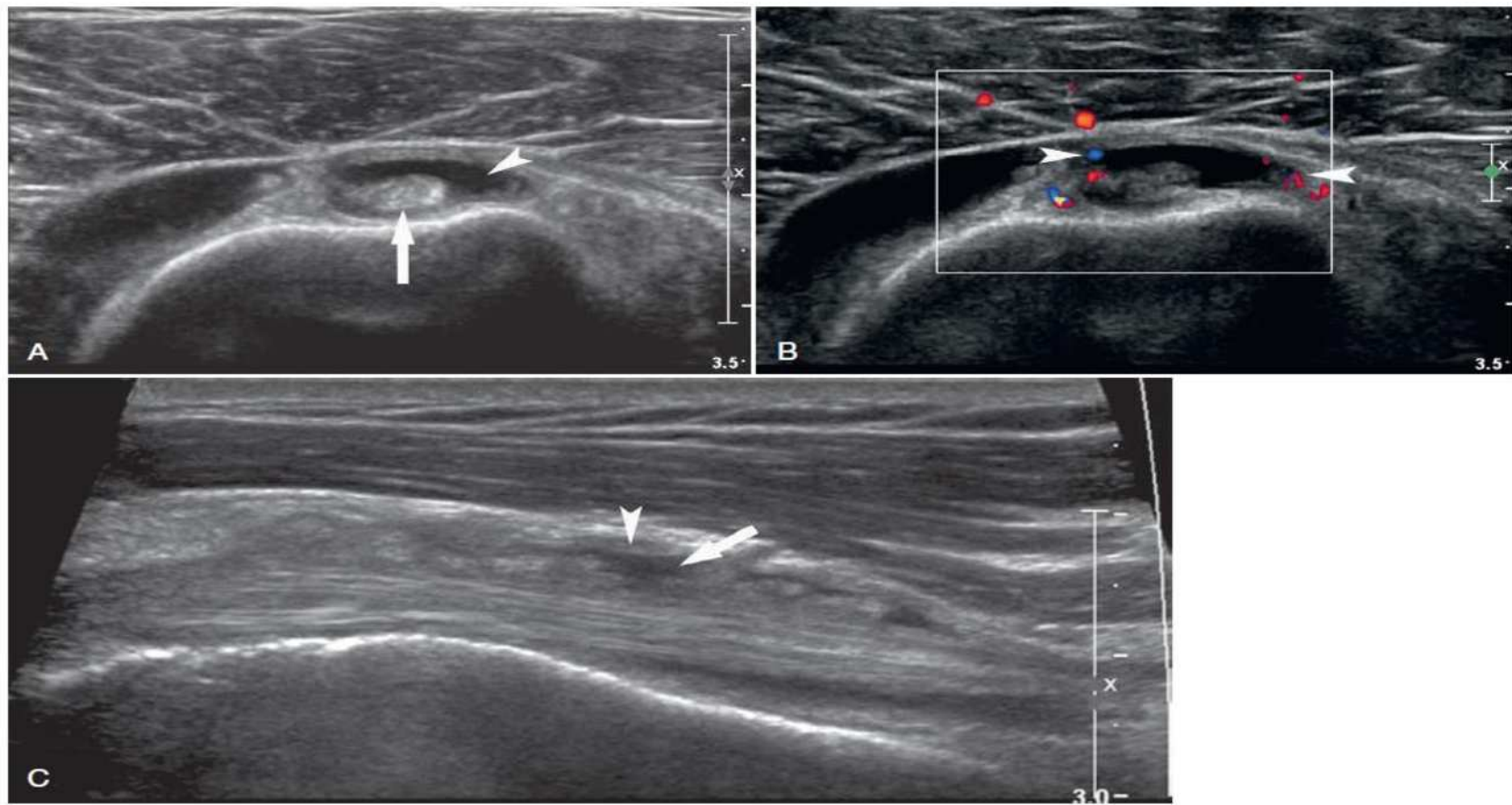




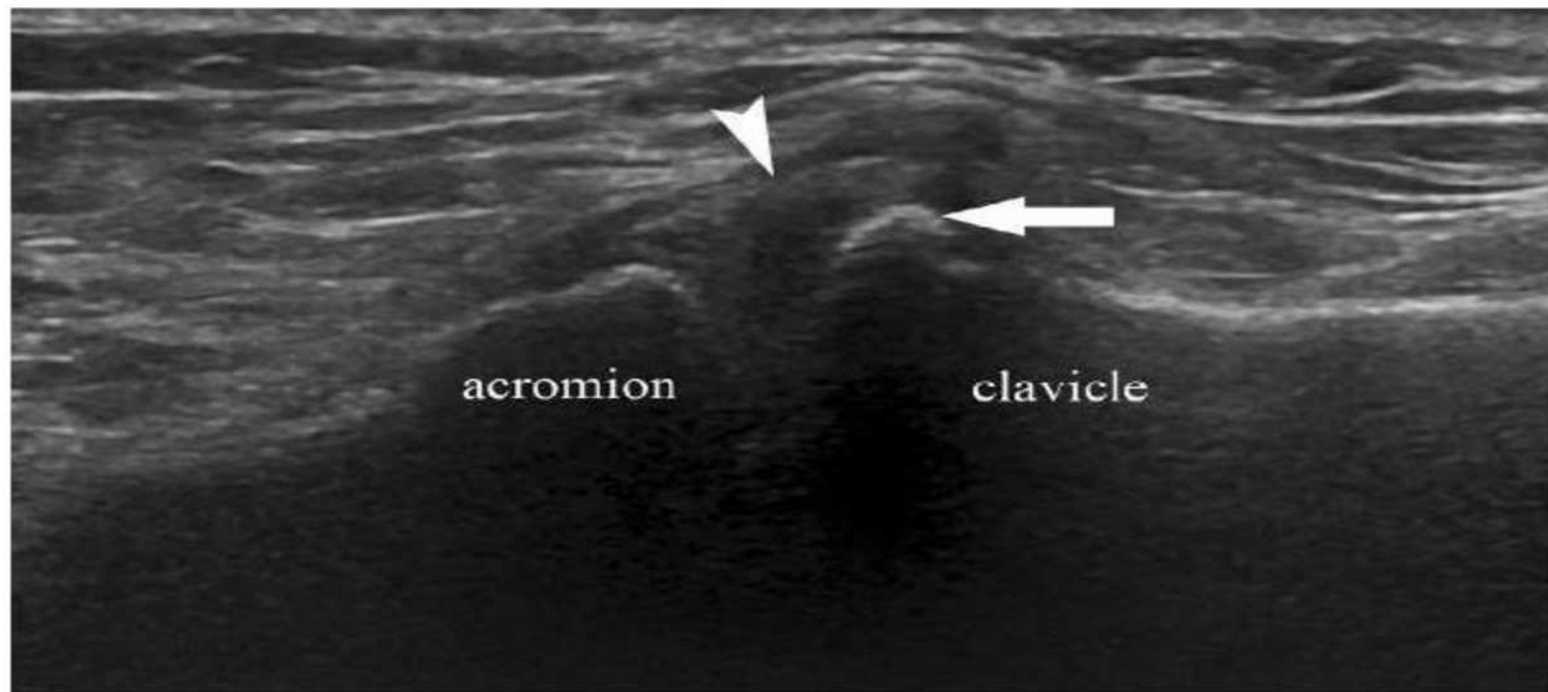


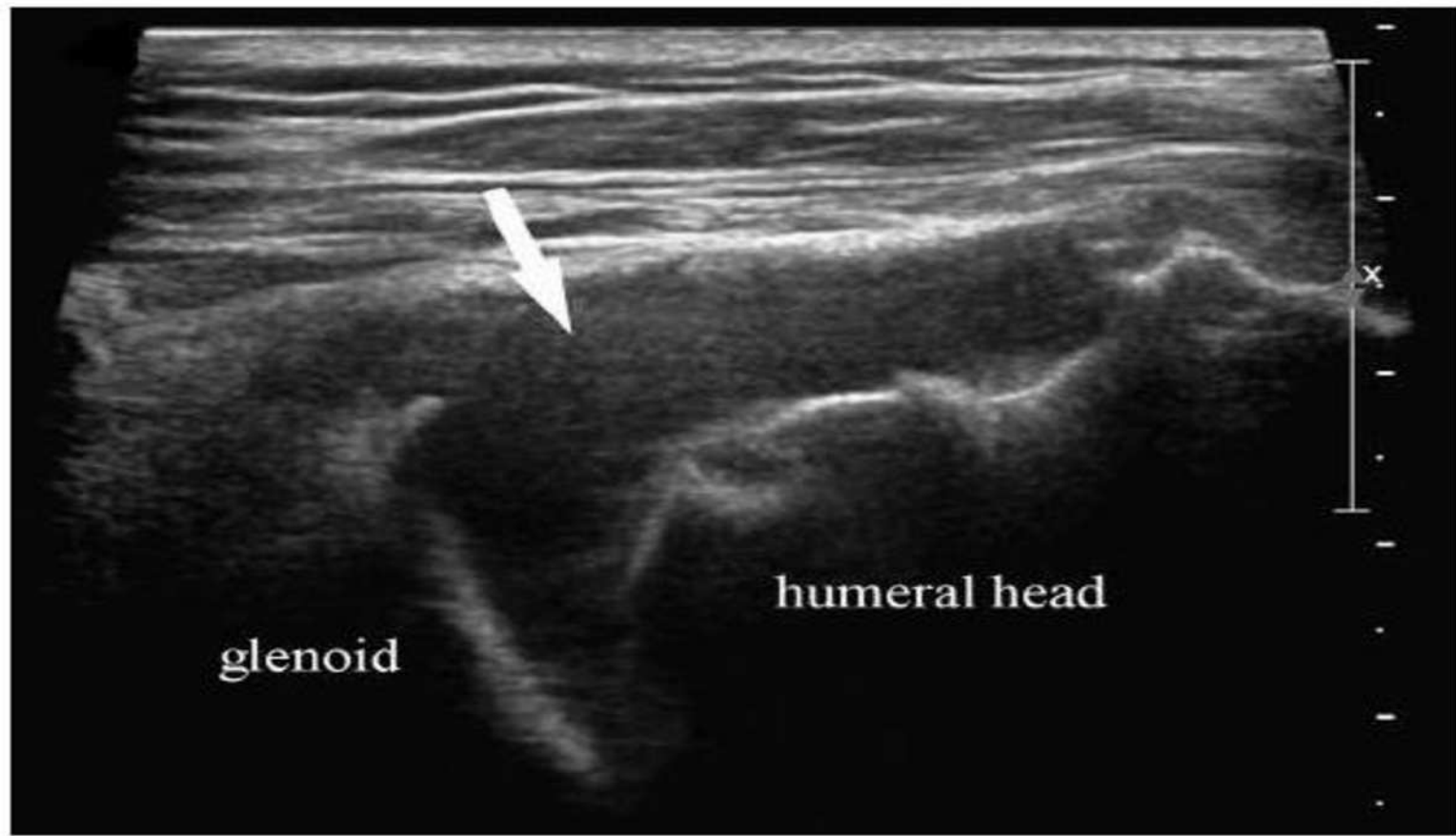
Kaltsifitseeriv tendiniit











Tänan kuulamast!



Kasutatud allikad

- × Kullerkann A. „Mida ortopeed radioloogilt õla uuringute kirjeldamisel ootab II“
- × Rumack C. „Diagnostic ultrasound 5th“
- × Lee M. H. et al „Comprehensive Shoulder US Examination: A Standardized Approach with Multimodality Correlation for Common Shoulder Disease“
- × <https://radiopaedia.org/articles/normal-radiographic-measurements-of-the-shoulder-1>
- × „Netter’s Concise radiologic anatomy 2nd“