

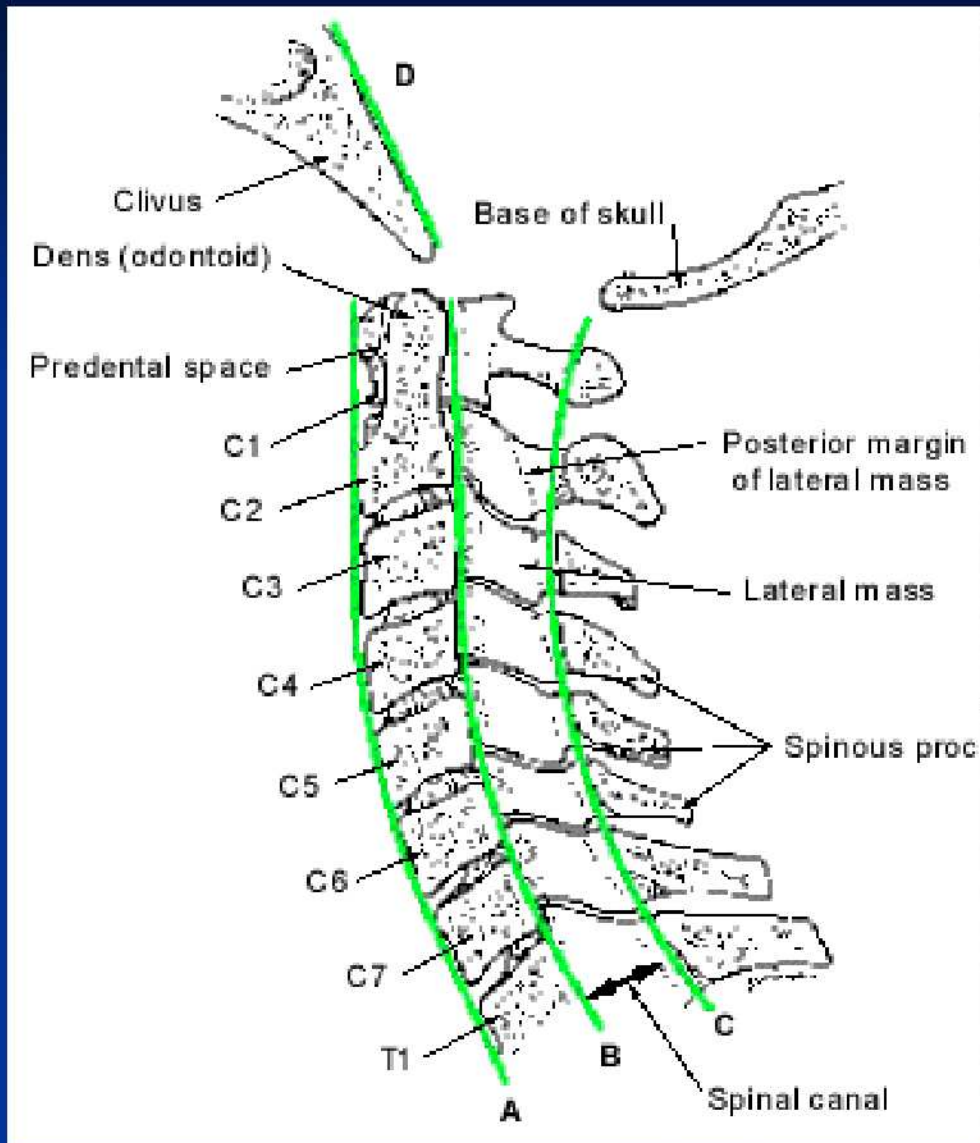
Lülisamba trauma

Kristi Kallavus

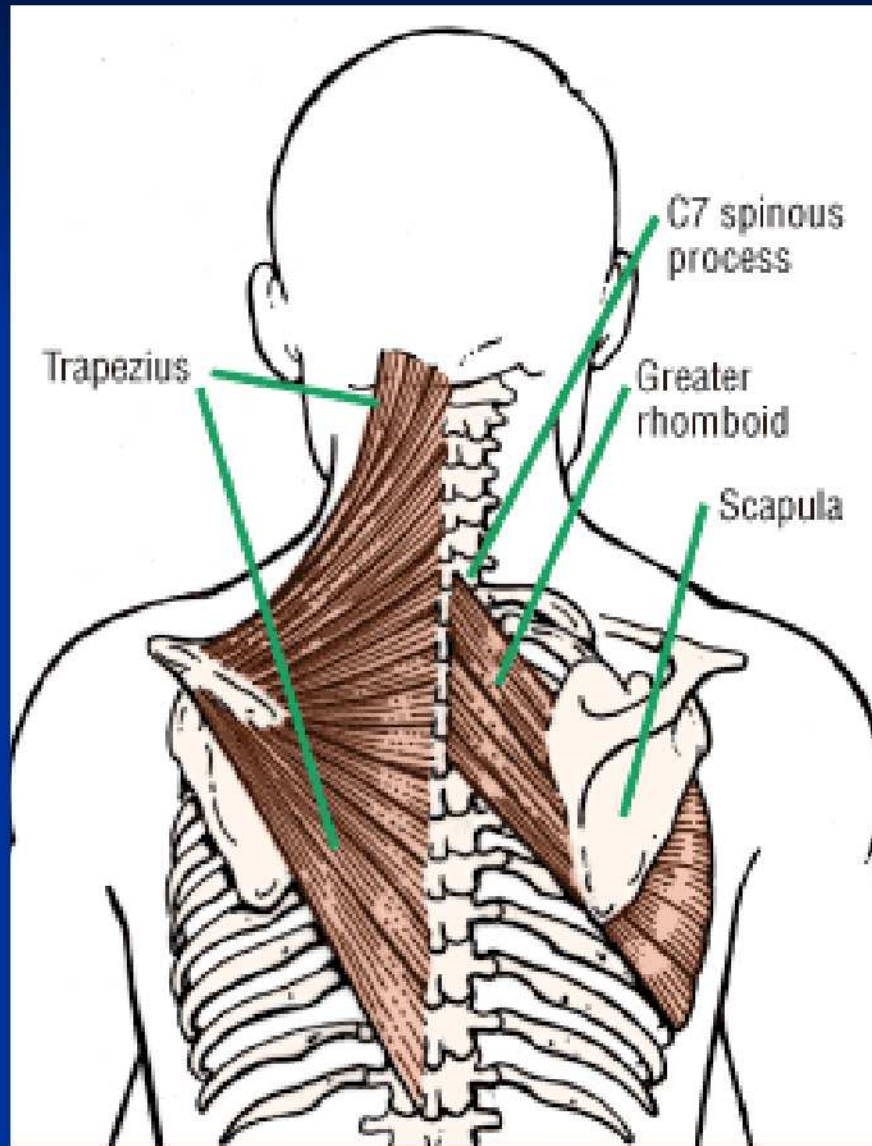
2.a. resident

22.02.2006

Elujooned



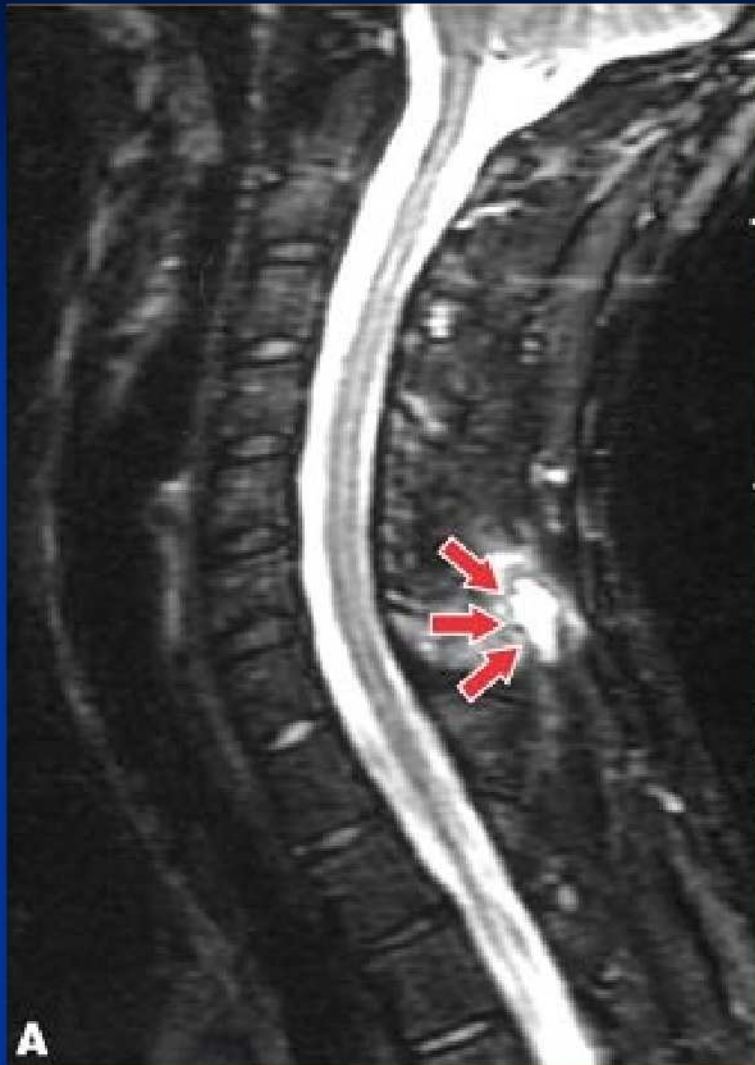
Clay shoveler's fracture ehk savikühveldaja murd



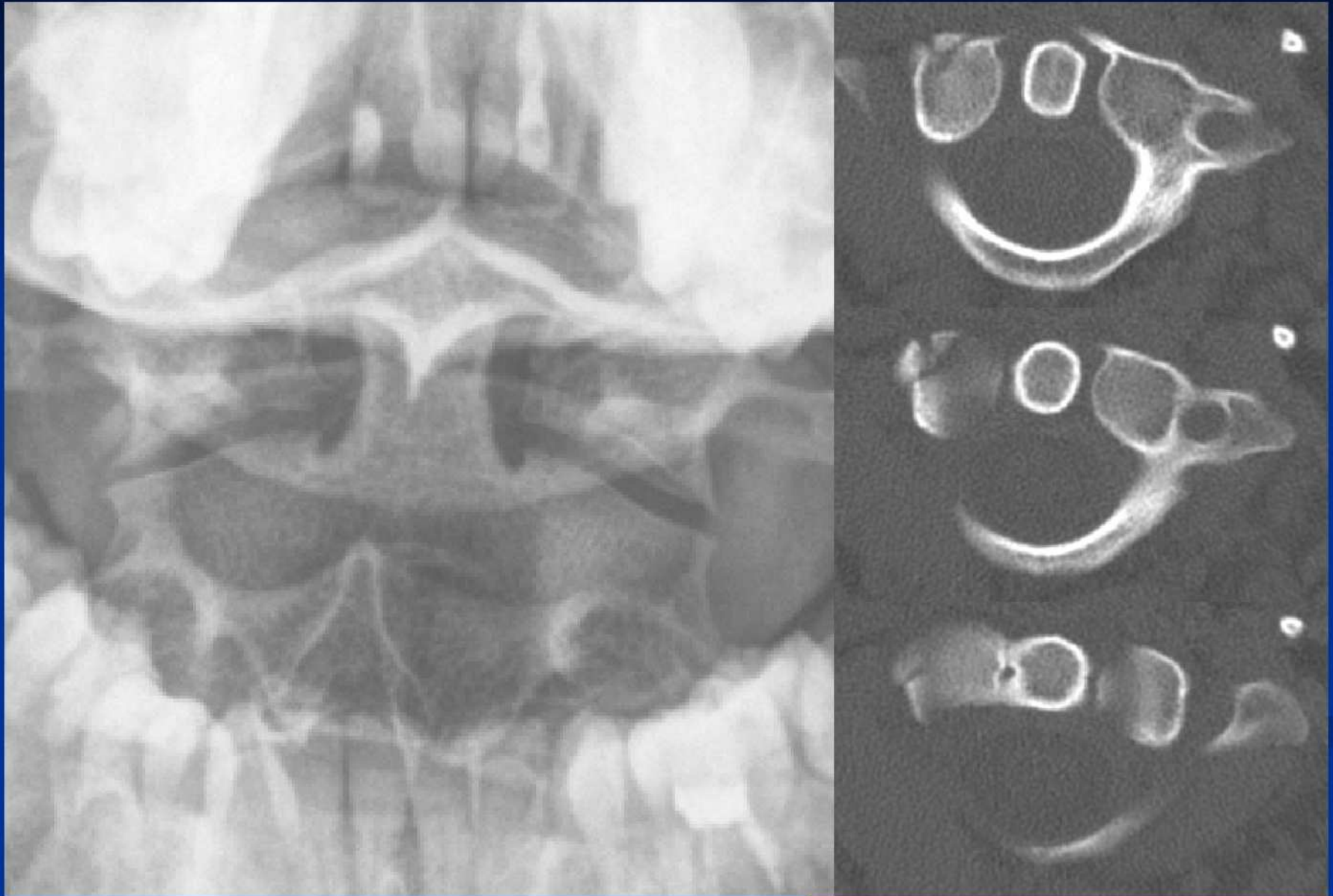
KT aksiaal- ja sagitaallõik



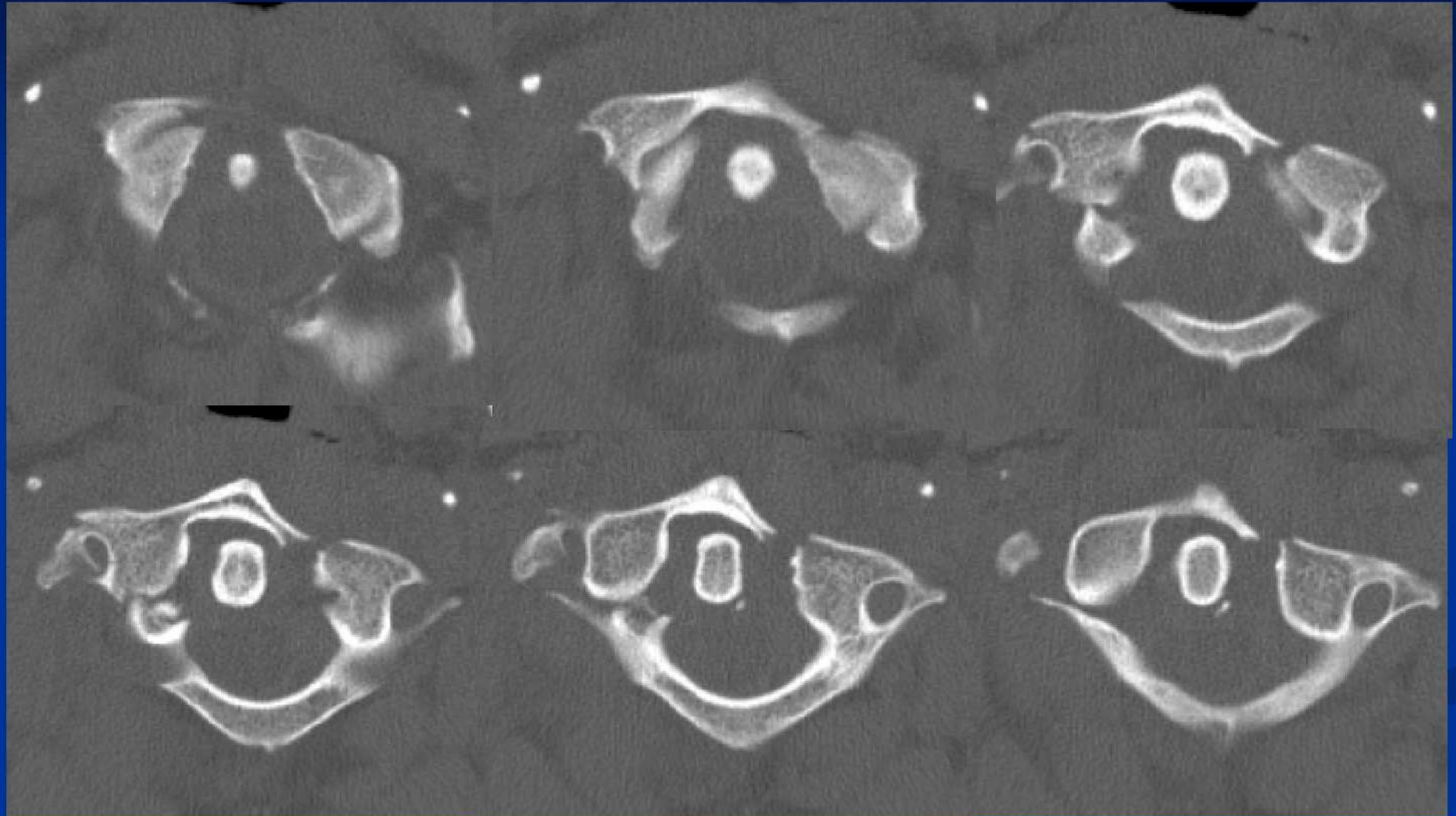
MRT T2 ja STIR



C1 parempoolse alumise fasseti väikese nihkega murd



C1 mrd

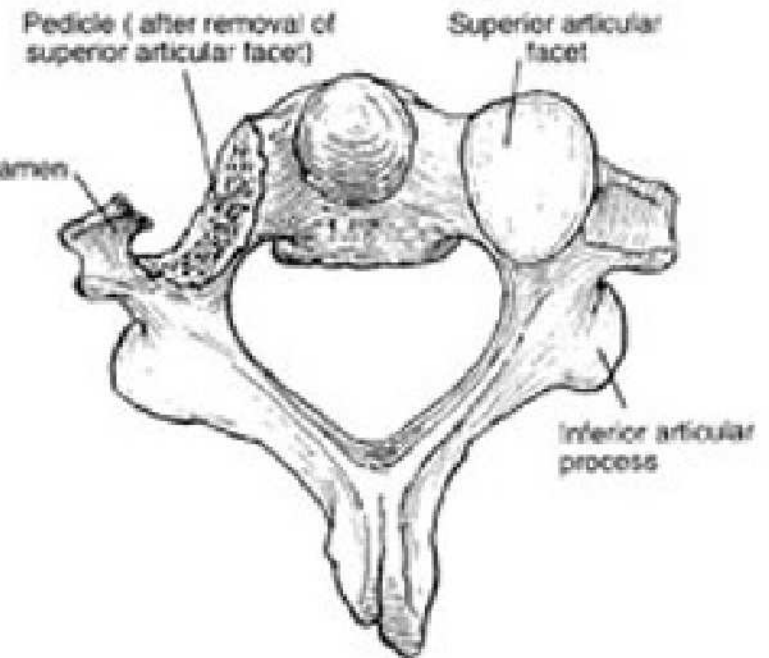
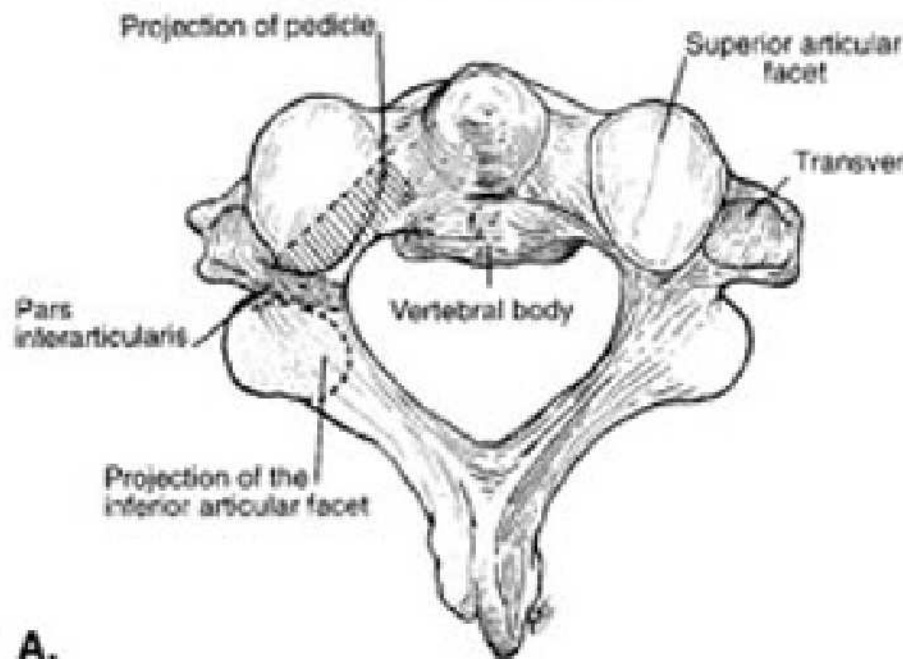


C2 lüli pediklite ja *pars interarticularis*'te asukoht

Medscape®

www.medscape.com

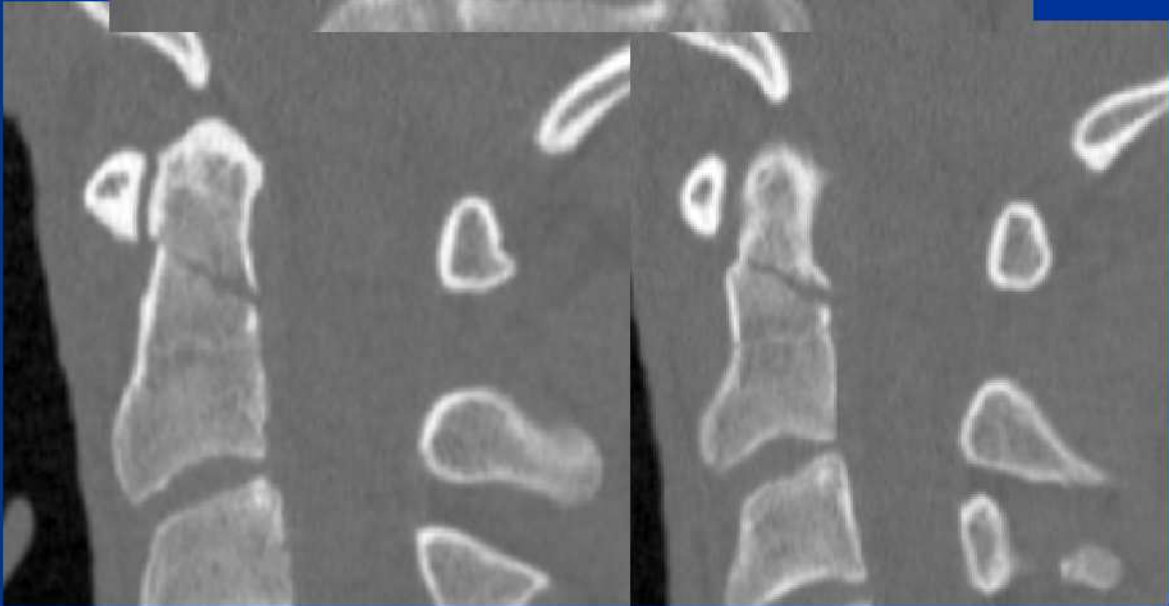
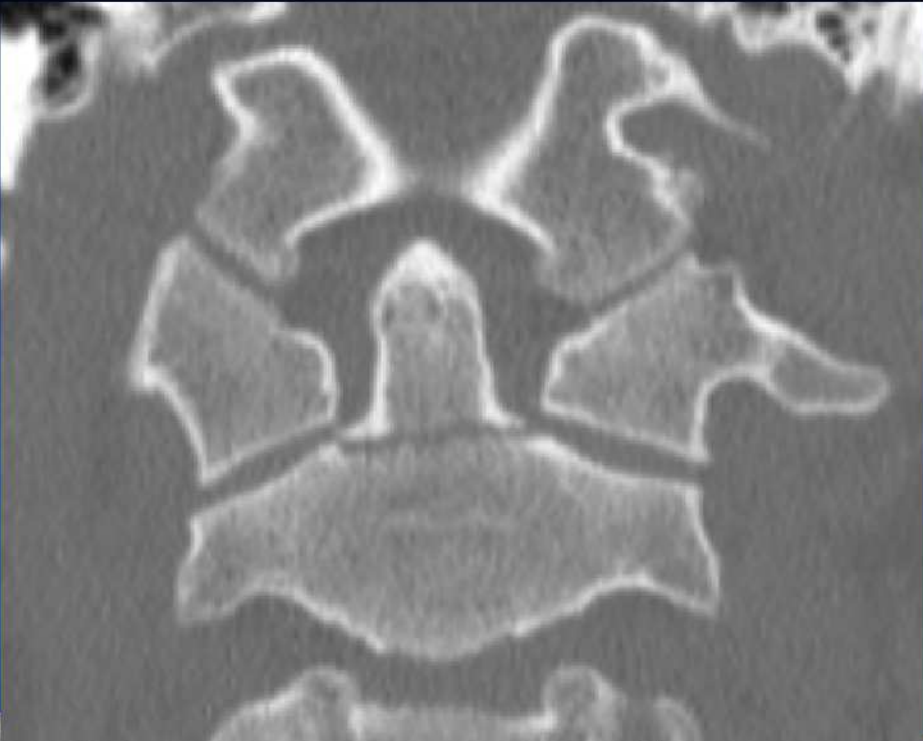
Superior view of C2



A.



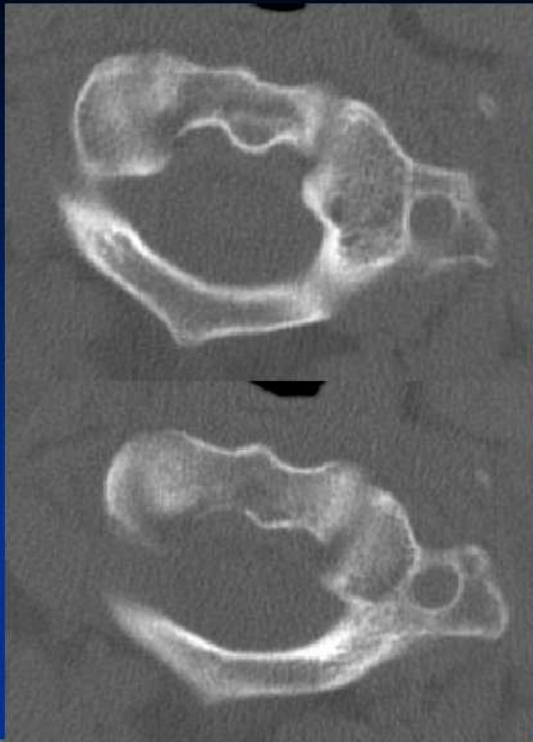
Densi murd





Densi + C1 murd





**Densi
murd**

Densi eesmine fiksatsioon kruviga



C2 lülikeha murd



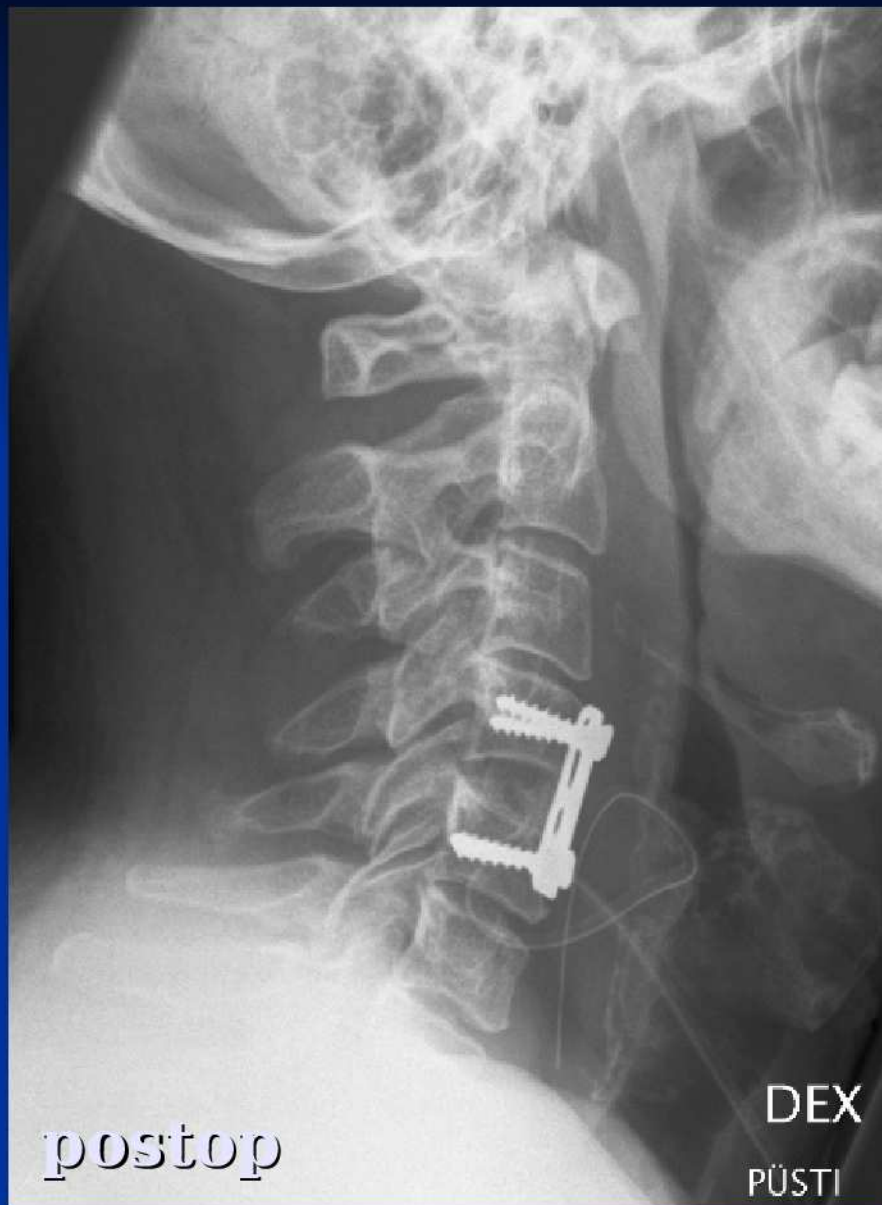
**C2 lülikeha
murd**



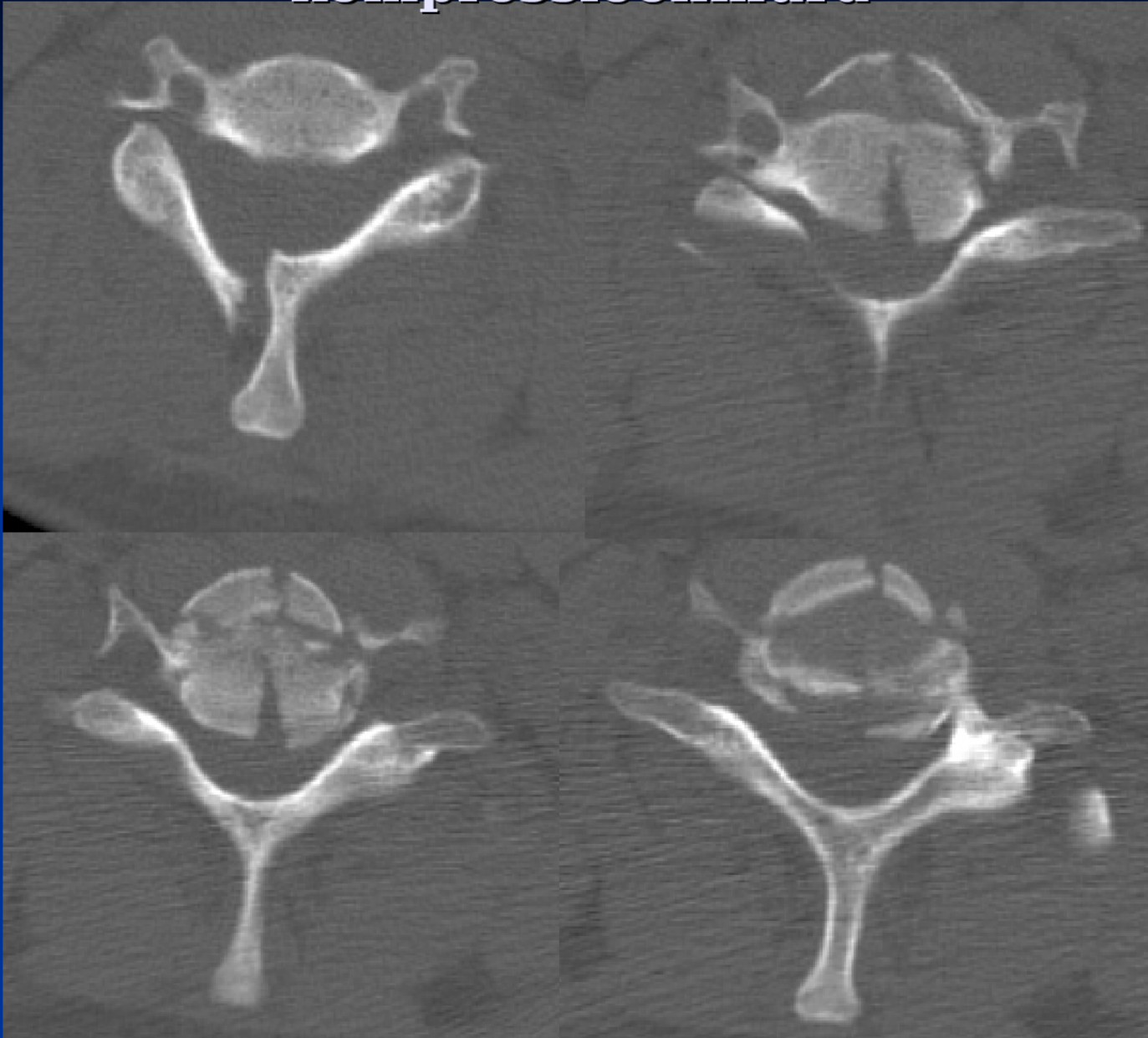


Subluksatsioon, lukustunud fassett

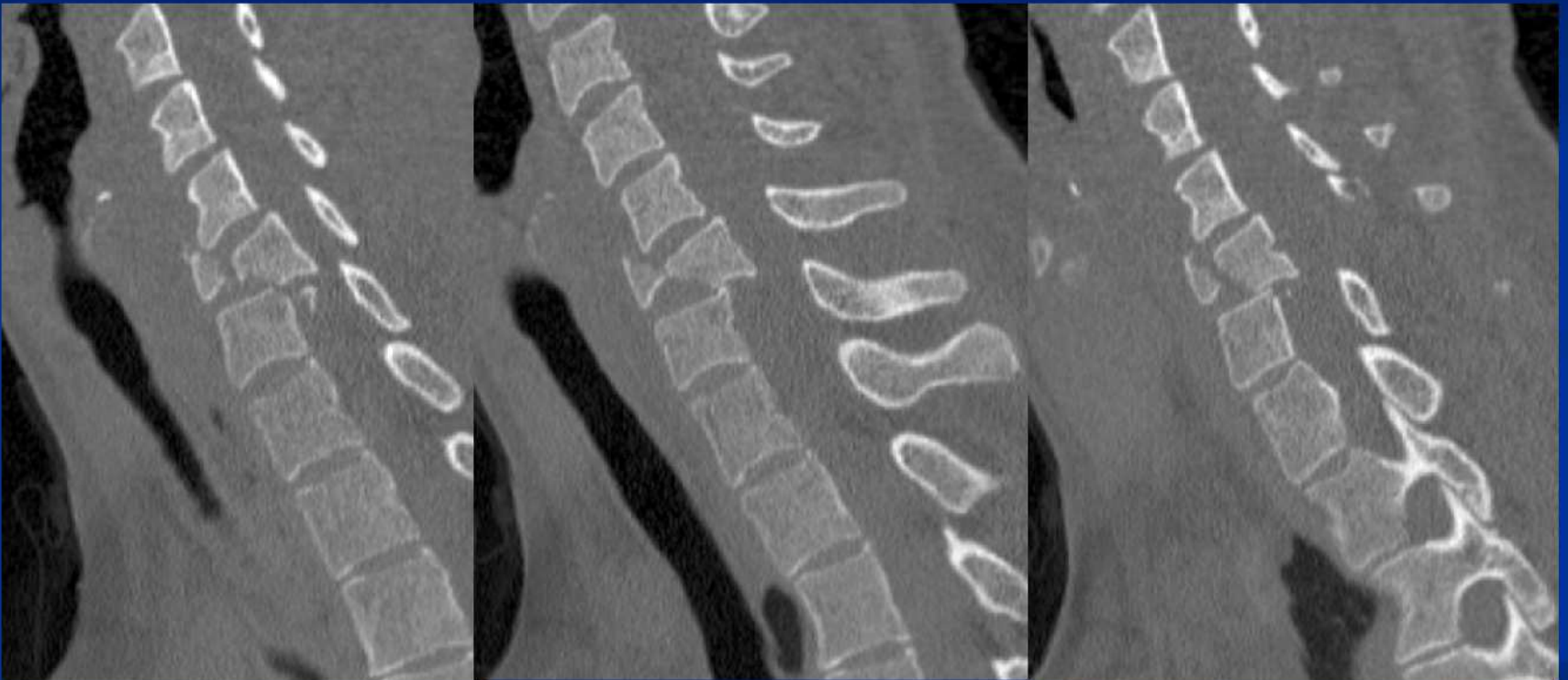




C5 lülukaare murd, C6 kompressioonmurd

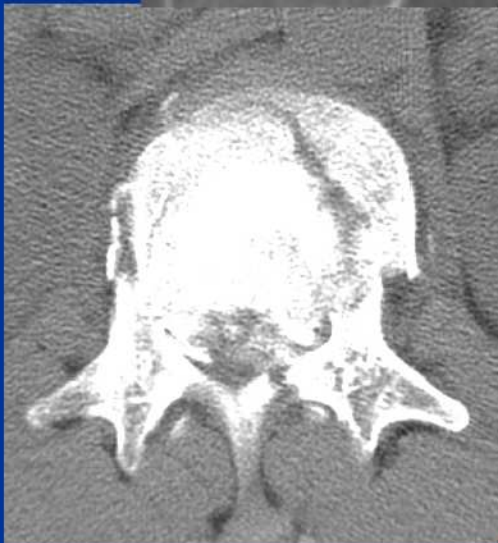


C6 kompressioonmurd





L1 kompressiooimurd





L3 kompressioonnurud

Kasutatud kirjandus

- **Imaging of Upper Cervical Spine Injuries - Part III: C2 Below the Dens.** A.Jarolimek,MD Appl.Radiol 33, 2004
- **Clay Shoveler's Fracture in a Volleyball Player** Iftach Hetsroni, MD; Gideon Mann, MD; Eran Dolev, MD; David Morgenstern, MD; Meir Nyska, MD **THE PHYSICIAN AND SPORTSMEDICINE** - VOL 33 - NO. 7 - JULY 2005
- **Fractures, Cervical/Lumbal Spine.** E.Belaval, MD
www.medscape.com
- **Cervical Spine Radiographs in the Trauma Patient** MARK A. GRABER, M.D., and MARY KATHOL, M.D. American Family Physician 1999